

1 Digital Print Kiosk Solution

The kiosk solution is a continuing development of the existing Integrex Digital print station kiosk hardware & software. The core application, which has been tried & tested for over 3 years, can be extended to meet The Clients retail requirements for E-TopUp, E-Voucher & Content delivery.

A separate Content & Remote Management Server (CRMS) application can provide the following services:

- Interface with the Client's chosen content provider, to collect preview & list information on the currently available content
- Format the content information for distribution to the kiosk estate
- Collate operational events & logs from the kiosk for management reporting purposes
- Deploy code, configuration & digital application content to the kiosks

1.1 Application Overview

The standard Integrex kiosk use Microsoft Windows XPE as its operating system

1.1.1 Digital Print Application Overview

The digital print application is a continuing development of the existing Integrex DPK application. The core application, has been tried & tested for over 3 years, and has been customized to meet the specific requirements of the clients.

Screen Flow

From the customer viewpoint, the application consists of a number of "screens", each forming part of the transactional flow. An initial attract sequence displays one or more media files from a defined play list, designed to provide information on products available from the device, as well as allowing for optionally advertising to be deployed.

The specific screen flow, images & messages can be customised to specific requirements. All messages, button images, screen images etc are configurable by registry settings and loaded at runtime, allowing a completely customisable interface for different environments and customer profiles.

The construction of the user interface screen is developed using tried and tested design methods enabling user to interact with the application with out any previous knowledge, all key words are larger font size and of a different colour, minimizing the need to read lengthy instructions and where ever possible pictographic references are used to allow instant understanding.



A transaction starts by the user touching the screen, which shows the product choice screen.



Upon touching the screen the user is presented with a standard disclaimer of copyright material. after accepting the standards terms of use the user is presented with a screen allowing the user to select the media type that the user wishes to print from. (Printing from a mobile phone is described in the following section)



After selecting the media type the user is instructed how to insert the media correctly each media type has its individual instructions, upon correct insertion the user is prompted to press the next button, if the user insert the media incorrectly they are notified and instructed to re-insert correctly.



Once the media has been correctly inserted the application begins to automatically read the images.



As the media is being read the user is offered a simple scaling option Fit Or Fill again using pictographic images, upon making their selection the next screen is presented to the user.



In the first instant the user is offered the option to print all images or select individual prints



At the Select Prints screen the user can select individual prints or select all images. If the using requires more than one print or set they can use the + or – buttons.



Once the user has made their selection the user is presented with a order summary and taken to the payment screen payment can be made by Credit or Debit Card as well as Notes or Coins. The device caters for CHIP & PIN payments



Once payment has been made the selected print job is released to print, this process eliminates shrinkage from non payment.



Whilst the pictures are being printed, the user is essentially a captive audience. During this time interstitial overlay sting broadcast. These could be in the form of a series of still images or an animation that could either be video or flash based.



After printing has been completed the user is prompted to remove there media card



Order Complete

Printing from a mobile phone.



To print a picture from a mobile phone the user selects the mobile phone icon they are taken through the standard disclaimer as with all other media types. During this period blue tooth file transfer is enabled on the unit



The user is prompted to identify the image to printed and using the SEND OPTIONS, prompted to send the image to Digital Print Express which will identified on the users handset



Once successfully docked the images is transferred.



Once an image has been successfully received the user is presented with a preview screen, image quality from mobile phone vary and it is important to allow the user to inspect print output. Additional images can be transferred.



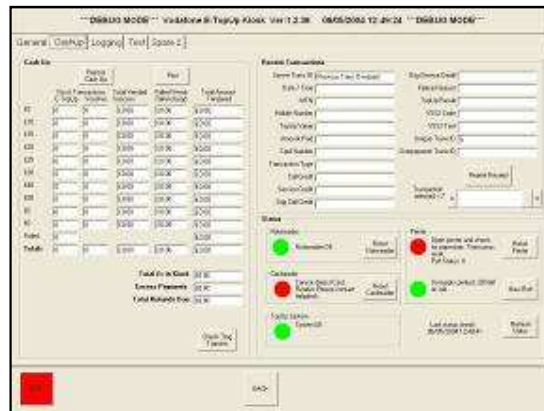
After completing selection the user can select their finishing format . After selection has been made the user is presented with the order confirmation screen as show on page 12 of this document,

1.1.2 Administration Functions

Underlying the screenflow is a full administration & engineering facility to enable staff at all levels to control the kiosk. Access to the admin function is via card insertion & PIN entry, although it is also possible to gain access using the internal keyboard should cards be mislaid.

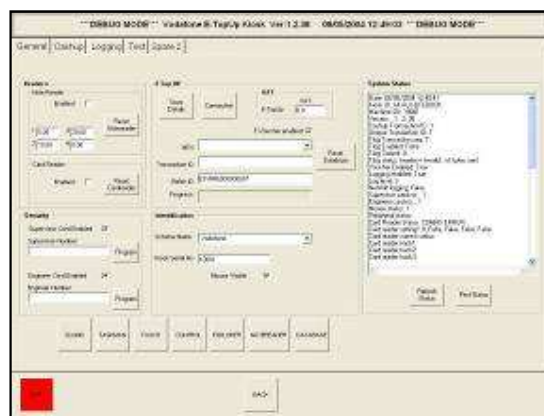
The admin screen is divided into tabbed areas, each with a specific functionality. Access to each area can be individually controlled by PIN if required, to maximise security and minimise the possibility of accidental errors. Store staff will normally only have access to the cashup tab area.

Cashup



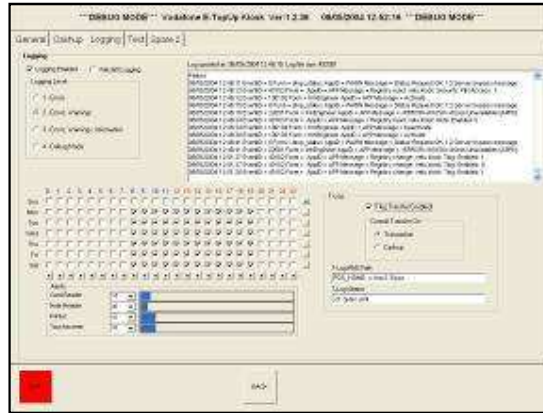
Gives store staff access to cash functions (Z-Read, cash collection) and receipt reprinting. A history of transactions since the last cashup can also be viewed & printed. The current status of hardware peripherals is displayed in a simple OK / Failed so that store staff can check the kiosk's availability.

General



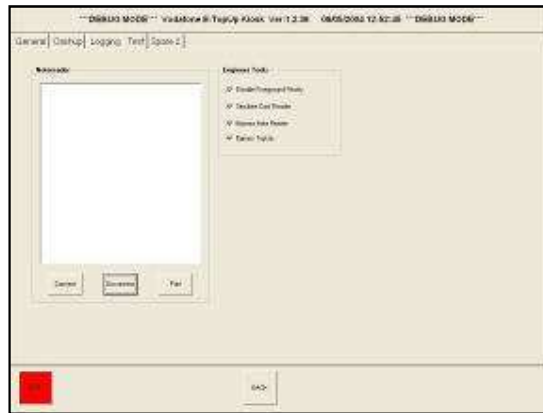
Gives access to engineering functions such as connectivity to hardware peripherals, admin card details, kiosk identification & system status display. Certain control panel & OS functions can be launched from here as well.

Logging



Displays the most recent 50k of logging information (pulled from local log file), together with options to change log level & parameters. Event notification for peripherals can also be handled here, allowing an event to be generated if any particular peripheral has not been used or has not responded with a certain time frame.

Test



Simple hardware tests can be carried out, together with disabling certain operational requirement (ie bypass card reader). This enables 1st & 2nd line support to remotely operate the kiosk without needing to insert a card, money etc.